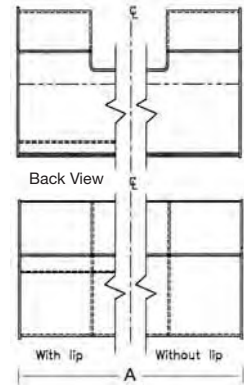
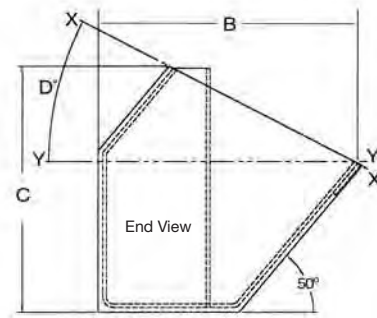
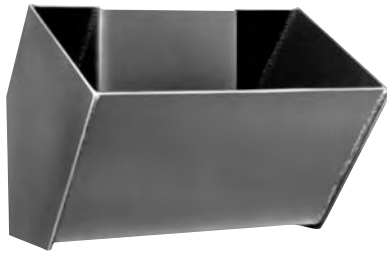


ACS FABRICATED STEEL ELEVATOR BUCKETS



STYLE ACS BUCKETS

SIZE (Nominal) Millimeter	SIZE (Nominal) Inches	Dimensions-Actual (Inches) Tolerance A, B & C $\pm 1/4"$				Weight, Pounds (Est.)			Capacity ^① Tolerance $\pm 3\%$	
		Length A	Proj. B	Depth C	Degree D	Steel (3/16")		Aluminum (3/16")	Gross X-X Cu. Ft.	Y-Y Cu. Ft.
						With Lip	W/O Lip			
350 X 300 X 280	14 X 12 X 11	14	12	11-3/8	26	36	32	15.3	.53	.37
400 X 300 X 280	16 X 12 X 11	16	12	11-3/8	26	39	35	17.2	.62	.44
450 X 300 X 280	18 X 12 X 11	18	12	11-3/8	26	42	37	19.0	.71	.51
525 X 350 X 290	21 X 14 X 13	21	14	13-3/8	28	56	51	25.3	1.08	.78
600 X 350 X 290	24 X 14 X 13	24	14	13-3/8	28	62	56	27.3	1.28	.93
670 X 370 X 290	27 X 15 X 13	27	15	13-3/8	21	72	65	32.3	1.62	1.29
740 X 370 X 290	30 X 15 X 13	30	15	13-3/8	21	84	77	37.3	1.84	1.47

① Tapco recommends using gross x .75, for usable capacity.

INDUSTRIAL STYLE FOR HANDLING:

STONE, FOUNDRY SAND, SAND & GRAVEL, COAL, FERTILIZER, CLAY, SALT, ETC.

FEATURES:

THE HIGH FRONT AND THE SADDLEBAG, OR WRAP-AROUND, FEATURES INCREASE CAPACITY, WHILE THE HOODED BACK PERMITS CLOSER BUCKET SPACING ON CHAIN.

TECHNICAL INFORMATION:

STYLE: ACS.

DESIGN: Slow speed centrifugal discharge.

MATERIAL: Carbon Steel, Stainless Steel, Aluminum.

METHOD OF MANUFACTURE: Fabricated.

STANDARD CONSTRUCTION: The ACS style bucket utilizes a 3-piece design consisting of two end plates, and body. All seams are continuously welded outside and partially inside. **The bucket will be produced after Tapco supplies a CAD drawing to be approved by customer.**

CONSTRUCTION OPTIONS: AR plate, wear lips, hard bead welds, or bearing plates

MATERIAL THICKNESS: 7 ga. (3/16"), 1/4", 5/16", 3/8", and 1/2".

DRILLING: No charge for standard chain drillings.

VENTING: Available on request, contact Tapco for recommendations.

USABLE CAPACITY: Tapco recommends using 75% of gross, (100%) capacity.

SPACING: Contact Tapco for recommendations.

INTERCHANGEABILITY: Can be intermixed with existing fabricated ACS style buckets. If different weight buckets are mixed in, some care should be taken that the leg does not become too far out of balance. Check elevator for proper clearances. Contact Tapco for recommendations.

INSTALLATION: Use Grade 5 hex head bolts with hex nuts, flat washers, and lock washers. **Elevator bolts should not be used on chain attachments.**

CAUTION: Welding and cutting on elevator legs without taking proper precautions is extremely dangerous and can cause a violent explosion.

AVAILABLE THROUGH INDUSTRIAL DISTRIBUTORS, CONTRACTORS, AND ORIGINAL EQUIPMENT MANUFACTURERS