

Pressure Relieving Applications



kcsupply.com



U 10" pressure-relieving fill cover — relieves pressure from 3 PSI to 5 PSI

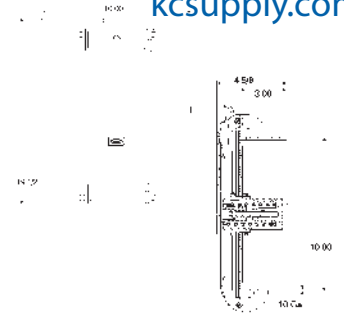
Cover Material	Weld Ring	Gasket	Vent	Replacement Gasket
1 SS304 / SS304	0 None	1 Buna N	0 No Vent	3429
2 Steel / Steel	1 3" x 10 Ga. SS304	2 Viton	1 NV2001	4949
3 Aluminum / Plated	2 3" x 10 Ga. Steel	3 Teflon Envelope with Neoprene	3 VE0008	3956
	3 3" x 0.190" Aluminum	4 White Neoprene		4868

Applications: Cleanout, Fill Opening, Inspection Cover, Sampling Port

Features: Spring-loaded fill cap provides positive seal under normal operation; eliminates flutter during emergency pressure release; additional venting capabilities; rated emergency venting capacity 191,268 CFH at 5 PSI

Avg ship weight: 16 lbs

Overall Height: 4 1/2" approximate



Pressure / Vacuum Relieving Tank Hatch



HA1110

HA 8" full opening pressure / vacuum relieving tank hatch

Base	Cover	Dome	Pressure Option
1 Steel, Weld, Straight	1 Plated Steel	1 Plated	0 None
2 Cast Iron, Flanged, Sloped			

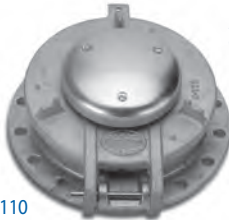
Relieves pressure at 1.5 oz / sq inch and vacuum at 0.5 oz/sq inch

Applications: Baghouse, food products, grain elevators, industrial products, silos

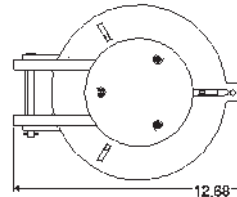
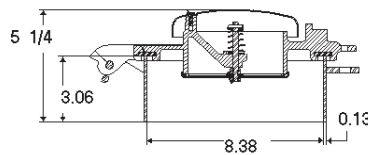
Features: Full opening cover can be used for sampling or inspection; available with bolt-on flanged base or straight weld-on base; dependable design is easy to maintain pressure relief of 46.4 sq inch free area and vacuum relief of 15.9 sq inch free area

Avg ship weight: 14 lbs (flanged base) / 19 lbs (weld ring)

Overall height: 5 1/4" weld base / 4 5/8" flanged base

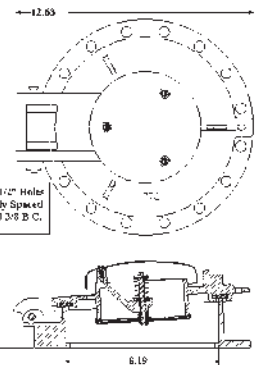


HA2110



Replacement Gasket

	Dome	Cover
Black Neoprene	1683	1676
White Neoprene	6769	6770



HC 20" full opening pressure / vacuum relieving tank hatch

Base	Cover	Dome	Pressure Option
1 Cast Aluminum	1 Cast Aluminum	1 plated steel dome	0 1 oz aluminum dome
		2 cast aluminum dome	0 2 oz steel dome
		(only available with 1 oz setting)	1 4 oz steel dome
			2 5 oz steel dome
			3 6 oz steel dome
			4 8 oz steel dome

Applications: Baghouse, food products, grain elevators, industrial products, silos

Features: Full opening cover can be used for sampling or inspection; available with bolt-on flange only. Pressure relief of 291 sq inch free area and vacuum relief of 78.5 sq in free area. Not for use with hazardous materials; product can be emitted when relieving pressure

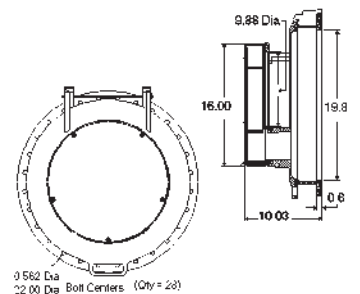
Overall height: 10 1/4" approximate

Avg ship weight: HC1120 = 40 lbs
HC1110 = 60 lbs
HC1111 = 100 lbs

Vacuum Setting (not adjustable): 0.5 oz / sq in. all models

Replacement Gasket

	Dome	Cover
Black Neoprene	1664	1165
White Neoprene	1160	1163



HH 24" full opening pressure / vacuum relieving tank hatch

Pressure Settings	Vacuum Settings	Gasket
2.0 oz through 29.0 oz	0.5 oz through 9.0 oz	White Food Grade (FDA Approved)
(increments of 1.0 oz)	(increments of 1.0 after the 1.0 oz setting Std Vacuum setting is 0.5 oz)	

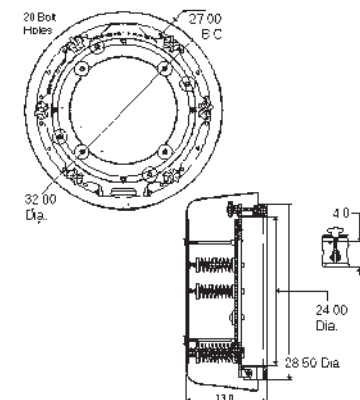
Applications: Baghouse, food products, grain elevators, industrial products, silos

Features: All-aluminum contact parts eliminate corrosion; no internal hardware to contaminate products; weather hood provides protection from elements; palm nuts allow for quick, easy opening; large 24" opening provides higher venting capacity and improved access into equipment.

Overall height: 13" approximate

Avg ship weight: 81 lbs

Warning: Cover should be inspected at least once each month to ensure proper operation and properly functioning hardware. The weather hood should be inspected for damage. Replace missing or damaged items.



1.800.KC.SUPPLY
1.800.527.8775

• 816.753.7676 •
kcsupply@kcsupply.com

Fax 816.753.0444