

Intrinsically Safe Permissible Dual-Light[™] Flashlight w/ Dual Magnets

Flashlight



Floodlight



Dual-Light



TECHNOLOGY

This non-rechargeable Dual-Light[™] flashlight with dual magnets is cETLus, ATEX and IECEx listed Intrinsically Safe Permissible. It uses a CREE[®] LED rated at 120 lumens that works in conjunction with a high-efficiency deep parabolic reflector to create a usable flashlight beam rated at 170 meters. A 120 lumens unfocused floodlight is integrated into the housing which is perfect for close-up illumination. Additionally both the flashlight and the floodlight can be turned on at the same time for maximum versatility. The dual body switches provides momentary or constant-on functionality for the flashlight and on/off functionality for the floodlight. Additionally, the integrated magnets located in the base of the handle and pocket clip, provide for almost limitless hands-free usage. Power comes from 3 AA batteries (not included).

**INTRINSICALLY SAFE
PERMISSIBLE**



120 Flashlight
Lumens

120 Floodlight
Lumens

240 Dual-Light[™]
Lumens

- cETLus, ATEX, IECEx and MSHA listed Intrinsically Safe Permissible
- Flashlight/floodlight/Dual-Light[™]
- Two Integrated hands-free magnets
- Beam distance rated at 170 meters



XPP 5422GM

XPP 5422GM

NIGHTSTICK
Life Depends on Light™



Intrinsically Safe Permissible Dual-Light™ Flashlight w/ Dual Magnets

High-efficiency deep parabolic reflector

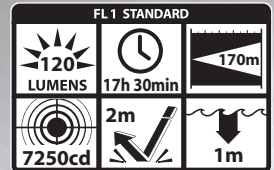
FEATURES

- Flashlight – floodlight – Dual-Light™
- CREE® LED technology – 50,000 + hours LED life
- Momentary or constant-on flashlight
- Sharp focused beam for distance illumination
- Unfocused wide-beam floodlight for close-up illumination
- Dual-Light (flashlight & floodlight at same time) for maximum versatility and user safety
- Powerful integrated magnets built into the base and clip for multiple hands-free options
- Engineered polymer housing
- Non-slip grip
- Dual body switches
- Waterproof
- Impact & chemical resistant
- Built-in pocket/belt clip
- Includes removable lanyard
- Requires 3 AA batteries (not included)
- Limited Lifetime Warranty*

Model	UPC 0 17398
XPP-5422GM	80448 6

SPECIFICATIONS

- Lumens: flashlight-120, floodlight-120, dual-light-240
- Run-time: flashlight-17.5 hrs, floodlight-17.5 hrs, dual-light-4.5 hrs
- Beam distance: 170 meters
- Water rating: IP-X7 waterproof
- Drop rating: 2 meters
- Length: 7.2in, head diameter: 1.8in, handle diameter: 1.5 x 1.1in, weight: 6.9oz



INCLUDED

- Flashlight with built-in pocket/belt clip
- Removable lanyard

SAFETY RATING

cETLus, ATEX, IECEx and MSHA listed Intrinsically Safe Permissible



Built in pocket/belt clip with integrated magnet



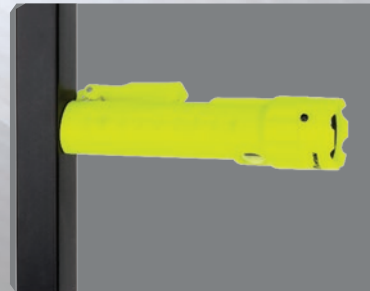
Integrated magnet built into the handle



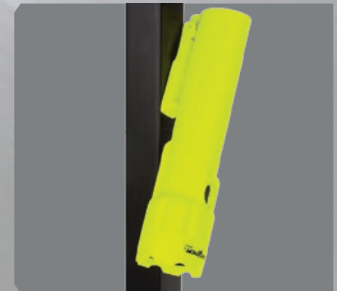
High-efficiency deep parabolic reflector



Wide-beam floodlight



Hands-free magnet in base



Hands-free magnet in pocket clip

Permissible Nightstick 5422 Flashlight/Floodlight
MSHA APPROVAL No. 20-A130001-0
 TESTED FOR INTRINSIC SAFETY IN METHANE-AIR MIXTURES ONLY
 WARNINGS: MSHA approved for use with three AA Duracell Type PC1500, Energizer Type EN91, and Energizer Type L91 batteries only. Replace the batteries in fresh air only and replace all batteries at the same time. Do not mix batteries from different manufacturers or of different types. Energizer Lithium (Type L91) batteries are to be replaced by a qualified technician only. The Model Nightstick 5422 must not be opened in areas where permissibility is required.

UL CLASS I DIV 1 GRPS A D T3 Ex ia I Ma
 CLASS II & III DIV 1 GRPS E-G T135C Ex ia IIC T3 Ga
 CLASS I ZONE 0 AEx ia IIC T3 Ga Intertek ITS 13 ATEX27837X
 CLASS I ZONE 0 Ex ia IIC T3 Ga IECEx ETL 13 0026X
 ID 4002026 © I M 1 Ex ia I Ma -20°C ≤ Tamb ≤ +40°C
 INTRINSICALLY SAFE 1.5V/Cell AA Alkaline
 SECURITE INTRINSEQUE

CE 0359

Conforms to:
 ANSI/IUL STD 913, ANSI/IUL 60079-0, ANSI/IUL 60079-11, ANSI/ISA 60079-26

Certified to:
 CAN/CSA STD C22.2 No 157, CAN/CSA STD C22.2 No 60079-0, CAN/CSA STD C22.2 No 60079-11, CSA STD C22.2 No 25



1.800.KC.SUPPLY

www.kcsupply.com

1.800.527.8775

kcsupply@kcsupply.com

Feb 02, 2016