

# Elevator Buckets and Bolts - sizes and styles available

Kansas City Missouri USA

1.800.527.8775 KC Supply offers Tapco elevator buckets for every need and for all types of products.

Size (Nominal) Inches	Polyethylene, Nylon, Urethane or Fabricated Steel						Nylon, Ductile Iron, Polyethylene, Urethane, Aluminum or Fabricated Steel		
	CC HD	XD	CC-B	U-HD	Low Profile	EuroBucket Super EuroBucket	Style AA	Style AC	Continuous
3 X 2	•				•				
4 X 2-3/4							•		
3-3/4 X 3					•				
4 X 3	•		•	•	•				
4 X 3-1/2				•		•			
5 X 3-1/2							•		
5 X 4	•		•		•				
6 X 4	•		•		•		•		•
7 X 4	•		•	•	•				
5 X 4-1/2							•		
7 X 4-1/2					•				
6 X 5	•		•	•	•	•			
7 X 5	•		•		•				
8 X 5	•		•		•		•		•
9 X 5	•		•		•				
10 X 5	•		•		•				•
11 X 5	•		•		•				
12 X 5	•		•		•		•		
15 X 5							•		
19 X 5							•		
7 X 5-1/2						•			
8 X 5-1/2						•			
9 X 5-1/2					•				
11 X 5-1/2				•	•				
18 X 5-1/2				•	•				
20 X 5-1/2				•	•				
8 X 6	•		•	•	•				
9 X 6	•		•		•		•		•
10 X 6	•		•		•		•		•
11 X 6	•		•		•		•		•
12 X 6	•		•		•		•		•
13 X 6	•		•		•				
14 X 6	•		•		•				
9 X 6-1/2						•			
11 X 6-1/2						•			
10 X 7	•		•		•				•
11 X 7	•		•		•				
12 X 7	•	•	•	•	•	•	•		•
13 X 7	•		•		•		•		
14 X 7	•	•	•		•		•		•
15 X 7	•		•		•		•		
16 X 7	•	•	•		•		•		
18 X 7	•		•		•				
20 X 7	•		•		•				
10 X 8	•		•		•				•
11 X 8	•		•		•				
12 X 8	•	•	•		•			•	•
13 X 8	•	•	•		•		•		•
14 X 8	•	•	•		•		•		•
15 X 8	•		•		•				
16 X 8	•	•	•		•		•	•	•
18 X 8	•	•	•		•		•		•
20 X 8	•	•	•		•		•		•
22 x 8		•			•				
24 X 8		•	•				•		
13 X 8-1/2						•			
15 X 8-1/2						•			
16 X 9	•		•		•				
20 X 9	•				•				
16 x 10		•							
18 X 10		•					•	•	•
20 x 10		•							
24 X 10							•		

### Polyethylene, Nylon or Urethane Style CC-HD, XD & U-HD:



A heavy duty agricultural bucket for handling grains, feeds, fertilizers, seeds, salt, sand, chemicals, and a variety of other free flowing materials. Polyethylene is ideal for most applications, while nylon or urethane is recommended for highly abrasive products or extremely high throughput elevators.

### Polyethylene, Nylon or Urethane Low Profile:



The same CC-HD, XD or U-HD style agricultural duty bucket as described above only modified to a "low profile" to allow closer spacing on the belt. Used to increase bucket elevator capacity over what can be achieved using conventional buckets and spacings.

### Polyethylene, Nylon, Urethane Super EuroBucket & EuroBucket:



A European style agricultural duty bucket molded in a "low profile" configuration. Super EuroBuckets and EuroBuckets are a direct interchange/replacement of European pressed steel and molded nonmetallic buckets.

### Nylon, Polyethylene or Urethane Style AA and AC:



An industrial duty bucket for handling foundry sand, sand and gravel, coal, fertilizers, clay, salt and many other industrial materials.

### Ductile Iron or Aluminum Style AA and AC:



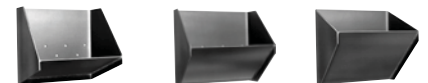
An industrial duty bucket for handling stone, foundry sand, sand and gravel, coal, fertilizers, clay, salt and many other industrial materials. Iron is ideal for large, dense, sluggish products or sharp cutting products such as crushed glass. Aluminum is a light weight bucket for nonabrasive products in hot applications (250°F to 400°F / 121°C to 204°C) where nonmetallic buckets can not be used because of the high temperature.

### Fabricated Steel Style CCB, Nu-Hy and Sweetheart:



Agricultural duty buckets for handling grain, feeds, fertilizers, seeds, salt, sand, chemicals, food products, and a variety of other free flowing materials. Steel is ideal for sharp cutting products such as crushed glass and hot applications (over 275°F / 135°C) where nonmetallic buckets can not be used.

### Fabricated Steel Continuous:



An agricultural and/or industrial duty bucket designed for use on "continuous type" bucket elevators. Runs at slow speed for gentle handling of a wide range of sluggish or fragile materials.

### No. 1 Norway Flat Countersunk Head:

A large diameter thin flat countersunk head bolt with plenty of surface area to secure the bucket and minimize chances of head "pullthrough" during hang ups. For use on pulleys larger than 6 inches in diameter.

### No. 3 Eclipse Slotted Head:

A smaller diameter ribbed and slotted head bolt for use on pulleys 6 inches and smaller in diameter.

### Fanged Head:

A large diameter thin countersunk head bolt similar to a No. 1 but with two fangs on the underside of head. Fangs penetrate the belt and prevent the bolt from turning during installation and removal. For use on pulleys larger than 6 inches in diameter. Pointed end aids in installation of bolt. Select sizes available with metric threads.

Length (Nominal) Inches	No. 1 Norway				No. 3 Eclipse		Fanged		Pointed Fanged	
	1/4-20	5/16-18	3/8-16	1/2-13	1/4-20	5/16-18	1/4-20	5/16-18	3/8-16	
3/4	•	•	•		•	•	•	•	•	
1	•	•	•		•	•	•	•	•	
1-1/4	•	•	•		•	•	•	•	•	•
1-1/2	•	•	•	•	•	•	•	•	•	•
1-3/4	•	•	•	•			•	•	•	•
2	•	•	•	•			•	•	•	•
2-1/4	•	•	•	•			•	•	•	•
2-1/2	•	•	•	•			•	•	•	•
2-3/4	•	•	•	•						
3	•	•	•	•						

• Steel    ■ Zinc Plate    ◆ Stainless

Contact KC Supply for other material options.